

4 - Dra te' Moss

Tempo di valse

9

mf *mf*

11

20

25

29

37

41

2

mf

46

mf

54

57

ff *mf*

63

65

mp

72

73

v *mf* *mf*

81



97



113



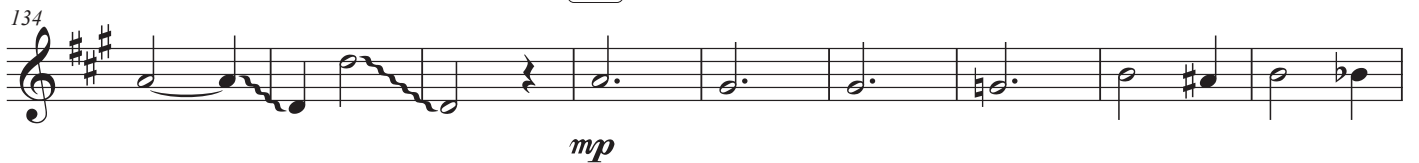
121



129



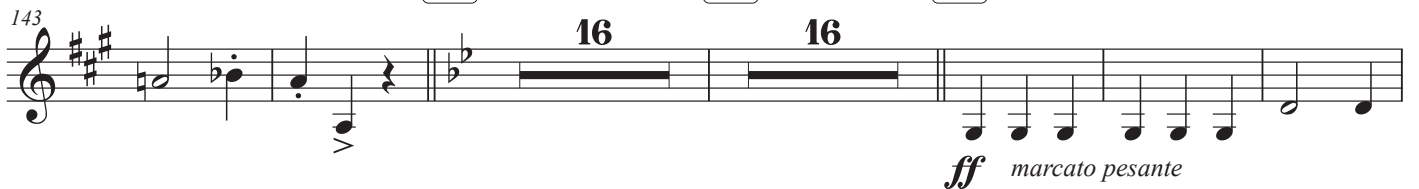
137



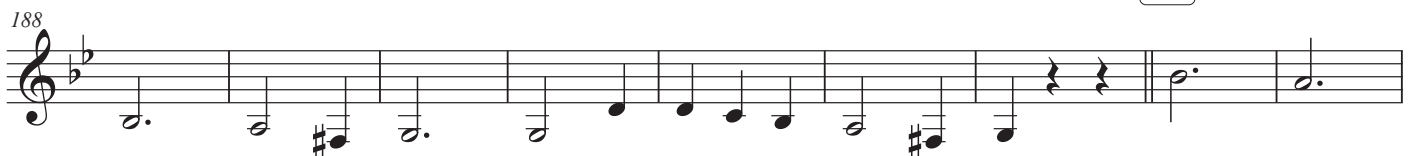
145

161

177



195



197 Musical staff 197-212. Treble clef, key signature of two flats. Measures 197-212. A fermata is placed over measures 208-212. A circled number '9' is positioned above the staff.

213 Musical staff 213-220. Treble clef, key signature of two flats. Measures 213-220. A circled number '220' is positioned above the staff. The dynamic marking *mf* is placed below the staff.

221 Musical staff 221-228. Treble clef, key signature of three sharps. Measures 221-228. A circled number '228' is positioned above the staff. The dynamic marking *mf* is placed below the staff.

231 Musical staff 231-240. Treble clef, key signature of three sharps. Measures 231-240. A circled number '244' is positioned above the staff.

240 Musical staff 240-249. Treble clef, key signature of three sharps. Measures 240-249.

249 Musical staff 249-257. Treble clef, key signature of three sharps. Measures 249-257.

257 Musical staff 257-266. Treble clef, key signature of three sharps. Measures 257-266. A circled number '260' is positioned above the staff. A circled number '2' is positioned above the staff. The dynamic marking *mf* is placed below the staff.

266 Musical staff 266-275. Treble clef, key signature of three sharps. Measures 266-275. A circled number '268' is positioned above the staff. The dynamic marking *mf* is placed below the staff.

275 Musical staff 275-284. Treble clef, key signature of three sharps. Measures 275-284. A circled number '276' is positioned above the staff. A dynamic marking *ff* is placed below the staff. A circled number '284' is positioned above the staff. The dynamic marking *mf* is placed below the staff.

283 Musical staff 283-292. Treble clef, key signature of three sharps. Measures 283-292. A circled number '284' is positioned above the staff. The dynamic marking *mp* is placed below the staff. A dynamic marking *sfz* is placed below the staff.